

Erika Vega

# *Queen Alice*

based on *Through the Looking-Glass*  
by Lewis Carroll

2 0 2 0

*Queen Alice* is dedicated to T R I O A T E M

Will be performed at the Henfrey Composition Prize 2021  
at the University of Oxford

# NOTES

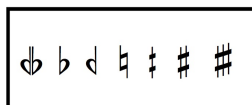
duration: 7' approx.

Throughout the piece, the three musicians alternate between traditional five-line staff and one-line staff notation.

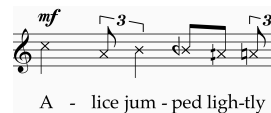
The **one-line staff** is used to indicate extended techniques such as white noise, inhaling and exhaling effects, and, in the case of the voice, spoken text, non-pitched gestures, and approximate pitch. In these passages, precise pitch is not required; instead, the performer should follow the general contour indicated in the score.

- 1) All performers read from score.
- 2) All the dynamics should be considered as they sound.

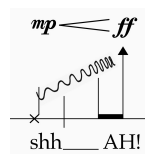
3) Quarter-tones :



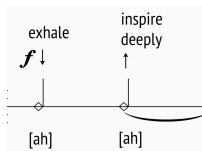
## Voice



Cross-head notes indicate a hybrid between speaking and singing. The tone quality should resemble heightened speech, loosely following the melodic contour notated, without aiming for precise pitch.



Arrow-head notes indicate sounds sung as high as possible, with undefined pitch. Focus on intensity and gesture rather than exact intonation.



Inspire deeply and exhale.

## Flute

- 1) The notation of the harmonics is indicated by the fundamental (the fingered pitch) and the sounding pitch.

ram = tongue ram

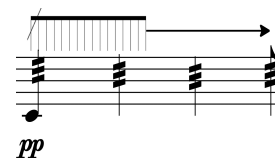
s.t. = slap tongue

w.t. = whistle tone

flz = flatterzunge, flutter-tongue

jet whistle = strong airstream without tone.

bisb. = bisbigliando



very fast random fingerings

- airy/pitch
- very airy
- normal pitch

⌵ key percussive effect

## Cello

- 1) Used abbreviations:

- 2) Bow position:

a.s.t. = alto sul tasto

s.t. = sul tasto

ord. = ordinario

s.p. = sul ponticello

a.s.p. = alto sul ponticello

- 3) I II III IV : number of the string which has to be played.

- 4) —————> gradual transition between two parameters.

- 5) ○ circular bow

- 6) white noise:

- muting the strings with the l.h.
- on the bridge side (avoid the higher pitch)



- 5) high pressure bow



# Queen Alice

## 1.- Looking-glass house

Erika Vega

5

**♩=60 Espressivo**

**4/4** **3/4** **2/4**

Mezzo-soprano *sfz* *hushed pp* *p* *mp* *pp*  
Oh! mm

Bass flute *f* *pp* *mf* *pp* *mf*  
key clicks/ sealed low register (definetely pitched) ram

Violoncello *mf* *pp* *non vib.* *ord.* *s.p.* *mp*

**Inquieto ♩=100**

**4/4** **5/8**

M-S. *pp* *secretively* *mf* *mf*  
Oh, \_\_\_\_\_ Ki - tty how\_\_ nice \_\_\_\_\_ it would be \_\_\_\_\_ if \_\_\_\_\_ tongue click

B.Fl. *p* *mf* *pp* *mf* *mf* *p* *sfz*  
pizz flz. ram

Vc. *mf* *sfzp* *mf* *p* *f*  
IV pizz arco pizz arco

**3**  $\text{♩} = 60$  **4**  
**4** with surprise  
 speech immediately  
 10 becomes whisper

**Inquieto**  $\text{♩} = 100$

M.S. how nice it would be if we could only get through into Looking-glass House!  
 Let's pre-tend there is a way of get-ting through

B.Fl. *p* *mf* *p* *p* *mf* *pp* *mf* *mf* *p*

Vc. *p* *sfz* *p* *p* *ppp* *mf* *pizz* *mf* *arco* *ord.*

*col legno tratto*  
*ricochet*

*secretively*  
*mp*

*breathy*

*pizz flz.*

**3** **2** **5** **4**  $\text{♩} = 72$   
**4** **4** **4** **4** **4**

M.S. 15 very breathy  
 [ah] [ah]  
 A - lice jum - ped high-tly down in to the loo-king glass room n

B.Fl. *mf* *pp* *mf* *f* *sfz* *p* *p* *mf* *p* *sfz* *pp*

Vc. *s.p.* *mf* *pp* *f* *white noise* *col legno* *mf* *p* *s.p.* *ppp*

*inhale through* *exhale*

*very breathy* *ordinario* *hushed, tenderly*

*flz.* *tongue pizz* *flz.*

\* pronounce indicate sylabes into flute  
 (breathy/airy effect)

58

[illegible]

## 2.- Looking glass insects

Ritmico, quasi meccanico  $\text{♩}=72$

**M.S.**  $\frac{4}{4}$  1 *mf* *f* *f* emphasize *f* what are those creatures inspire deeply exhale *mf* 3 *p* dreamlike, 3 3 3 3 emphasize *f* They cant be bees, nobody ever saw bees a mile off

[ch]what are

**Fl.** *p* *mf* *f* *f* inspire-exhale into flute [a-ah] 6 jet whistle tongue pizz [ch-k] 3 7 tongue pizz [ch-k] 3 7 5 7 *pp* *f* speak into the fl. unison w/sop. They cant be bees, nobody ever saw bees a mile off

**Vc.** *sfz* *p* *mp* *mf* *f* *p* *col legno tratto* *a.s.p.* *sfzp*

Inquieto, energico  $\text{♩}=82$

**M.S.** 7 *pp* *ff* shouting euphoric *mp* buzzing *zzzz* glass in - sects

**B.Fl.** *f* *p* *mf* 5 5 *p* *pp* *mf* mutter loudly and unintelligibly into fl. (fast and random pitches)

**Vc.** *sfzp* *mf* *sfzp* *ord.* *a.s.p.* *s.p.* *ord.* *mf* *sfzp*

\* slightly touch the string at the indicated harmonic throughout the passage, the pitch is approximate





20

M-S. inspire deeply ↑ exhale ↓ *mf* 3 dreamlike, *p* 3 *f* I wonder if that's the reason insects are so fond of flying into candles-because they want to turn into Snap-dragon-flies! tip *f* hand over mout, blow *mf* laughter *p* *sfz* hahaha\_

crea - tures\_ ma-king ho - ney down\_ there

B.Fl. tongue pizz *ff* *p* 3 [ch-k] *f* 7 tongue pizz *mf* 3 [ch-k] *pp* 5 [t-k] *f* 7 speak into the fl. unison w/sop. jet whistle *p* *mf*

Vc. *\*col legno* sul A *p* 3 *mp* 3 *mf* 3 *f* *col legno tratto* *p* 3 3 3 *\*col legno* *p* 3 *mp* 3

Inquieto, energico ♩=82

26

M-S. inspire deeply ↓ exhale ↑ *mp* *ff* shh\_ AH! *pp* *mf* k k k k k k k k k k k k k k k k

B.Fl. [ch-k] *mf* 7 [t-k] *pp* 5 7 flz. *p* *mf* 5 *pp* *mf*

Vc. white noise 5 5 s.p. *sfz* ord. *sfzpp* *mp* *p* *sfz* *sfz* *sfz* ord. *sfz*

with the same breath

32 *mf* 5 *p* 3 *mf* *urgent* *pp*

M-S. ah mm ah tip-to-e tip-to-e tip-to-e tip-to-e tip-to-e tip-to-e tip-to-e

B.Fl. *flz.* *mf* *pp* [t-k] *pp* *sfz p* *f* *ff* *s.t.*

Vc. 3 *s.p.* *sfz p* *sfz p* *sfz p* *sfz p* *a.s.p.* *sfz p*

36 *f* tip tongue click *mf* hand over mout, blow *f* it was an elephant! *mf* buzzing *mf* zzzz

B.Fl. keyclicks *p* *mf* *p* [ch-k] *mf* 7 *f* jet whistle *mf* inspire-exhale into flute [a-ah] 6 *f* mutter loudly and unintelligibly into fl. (fast and random pitches)

Vc. white noise *pp* 5 *p* *mf* 5 5 *non dim.*

### 3.- Wool and water

Meditativo, senza tempo ♩=56

Bass flute

B.Fl.

1

*pp* *pp* *mp* *pp* *p* *mf* *p* *mf*

10

B.Fl.

*p* *mf* *p* *p* *mp*

singing

## 4.- It's my own invention

**4** Meno mosso, tranquillo ♩=80

**4**

M-S. 22

whispering *p* *mf* *mp* *non vib.*

I'll tell the e-very-thing I can There's li- ttle to re-late I saw an aged aged man A\_\_

B.Fl. *ff* *pp* *fp* *ff* *p* *non cresc.* *pp*

Vc. *p* *mf* *pp* *p* *mf* *pp* *p* *mf* *pp* *p* *mf* *pp*

30

si- tting on a gate\_ who\_ are you?\_ and how is it you li\_ ve?

B.Fl. *sfzp* *sfzp* *sfzp* *sfzp* *sfzp* *mf* *p* *mf* *p* *mf*

Vc. *p* *mf* *pp* *p* *mf* *pp* *p* *mf* *pp*

Flute *flz.* *ord.* *s.p.* *a.s.p.* *flz.* *flz.*

whistle tones *bisb.*

*3* *5* *3* *5* *6* *6* *3*

36

S. *f* tongue click *p* whispering *mf*

I'll tell the e-very-thing I can There's li-ttle to re-late

B.Fl. *flz.* *p* *fp* *fp* *f* *bisb.* *p* *ff* <sup>3</sup>

Vc. *pp* *p* *mf* *pp* *p* *mf* *pp* *p* *mf* *pp* *mf* *p* *mf* *pp*

45 *senza espressione*

S. And his answer trickled through my head  
Like water through a sieve

B.Fl. *flz.* *pp* *fp* *ff* *p* *Bass fl.* loudly whisper into fl.

Vc. *p* *mf* *pp* *p* *mf* *pp* *p* *mf* *pp* *pp* *white noise* *pp*

no tears came in-to her eyes Through The Loo-king Glass

no tears came in-to her eyes Through The Loo- king Glass